

Name _____

Date _____

Circle the letter next to the correct answer.

1. Find the answer.

$$\begin{array}{r} 19 \\ - 5 \\ \hline \end{array}$$

- A. 3
- B. 14
- C. 12
- D. 24



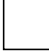

2. Find the answer.

$$\begin{array}{r} 54 \\ - 23 \\ \hline \end{array}$$

- A. 31
- B. 42
- C. 50
- D. 77

3. Choose the next shape in the pattern.



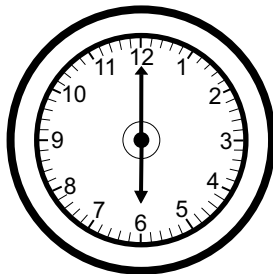
- A. 
- B. 
- C. 
- D. 

4. Find the answer.

$$\begin{array}{r} 72¢ \\ - 24¢ \\ \hline \end{array}$$

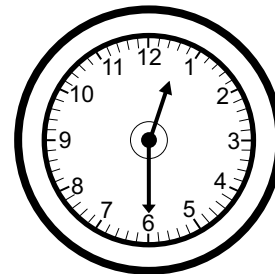
- A. 27¢
- B. 48¢
- C. 52¢
- D. 96¢

5. What time is it?



- A. 12:00
- B. 12:30
- C. 6:00
- D. 6:30

6. What time is it?



- A. 12:00
- B. 12:30
- C. 6:00
- D. 6:30

Circle the letter next to the correct answer.

7. Gina eats one-half of a pizza. How much is left?

- A. one-third
- B. one-fourth
- C. one-half
- D. none

8. Sam has 19 toys. He receives 7 more. How many toys does he have now?

- A. 11
- B. 12
- C. 25
- D. 26

9. Find the answer.

$$76 - 6 + 20 = \underline{\quad}$$

- A. 50
- B. 60
- C. 80
- D. 90

10. What would be the temperature on a hot summer day?

- A. 30°F
- B. 90°F

11. How much money is shown?



- A. 23¢
- B. 25¢
- C. 28¢
- D. 29¢

12. Which group of coins is worth the same as six nickels?



Circle the letter next to the correct answer.

13. How many cups are there in 2 pints?

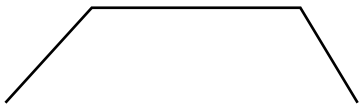
- A. 8
- B. 6
- C. 4
- D. 2

14. Jenny has 40¢. She has 4 coins, but no dimes. What are the coins?

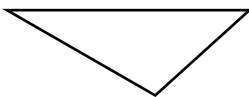
- A. quarter, nickel, penny, penny
- B. penny, penny, penny, penny
- C. nickel, nickel, nickel, penny
- D. quarter, nickel, nickel, nickel

15. Which figure has more sides than corners?

A.



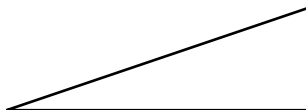
B.



C.



D.



16. 10 cars go by every minute. If you watch the cars go by for 3 minutes, how many cars will you see?

- A. 3
- B. 10
- C. 30
- D. 60

Name _____

Date _____

Circle the letter next to the correct answer.

1. Find the answer.

$$\begin{array}{r} 19 \\ - 5 \\ \hline \end{array}$$

- A. 3
- ☒ B. 14
- C. 12
- D. 24

2. Find the answer.

$$\begin{array}{r} 54 \\ - 23 \\ \hline \end{array}$$

- ☒ A. 31
- B. 42
- C. 50
- D. 77

3. Choose the next shape in the pattern.



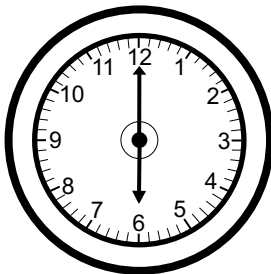
- A.
- B.
- ☒ C.
- D.

4. Find the answer.

$$\begin{array}{r} 72¢ \\ - 24¢ \\ \hline \end{array}$$

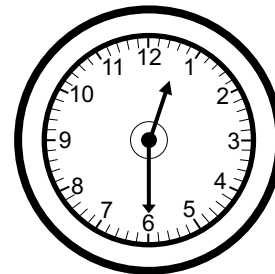
- A. 27¢
- ☒ B. 48¢
- C. 52¢
- D. 96¢

5. What time is it?



- A. 12:00
- B. 12:30
- ☒ C. 6:00
- D. 6:30

6. What time is it?



- A. 12:00
- ☒ B. 12:30
- C. 6:00
- D. 6:30

Circle the letter next to the correct answer.

7. Gina eats one-half of a pizza. How much is left?

- A. one-third
- B. one-fourth
- ☒ C. one-half
- D. none

8. Sam has 19 toys. He receives 7 more. How many toys does he have now?

- A. 11
- B. 12
- C. 25
- ☒ D. 26

9. Find the answer.

$$76 - 6 + 20 = \underline{\quad}$$

- A. 50
- B. 60
- C. 80
- ☒ D. 90

10. What would be the temperature on a hot summer day?

- A. 30°F
- ☒ B. 90°F

11. How much money is shown?



- ☒ A. 23¢
- B. 25¢
- C. 28¢
- D. 29¢

12. Which group of coins is worth the same as six nickels?



Circle the letter next to the correct answer.

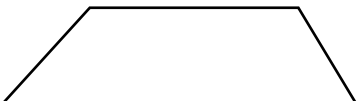
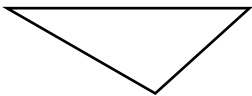
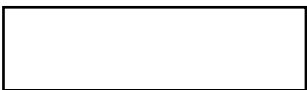

13. How many cups are there in 2 pints?

- A. 8
- B. 6
- ☒ C. 4
- D. 2

14. Jenny has 40¢. She has 4 coins, but no dimes. What are the coins?

- A. quarter, nickel, penny, penny
- B. penny, penny, penny, penny
- C. nickel, nickel, nickel, penny
- ☒ D. quarter, nickel, nickel, nickel

15. Which figure has more sides than corners?

- ☒ A. 
- B. 
- C. 
- D. 

16. 10 cars go by every minute. If you watch the cars go by for 3 minutes, how many cars will you see?

- A. 3
- B. 10
- ☒ C. 30
- D. 60